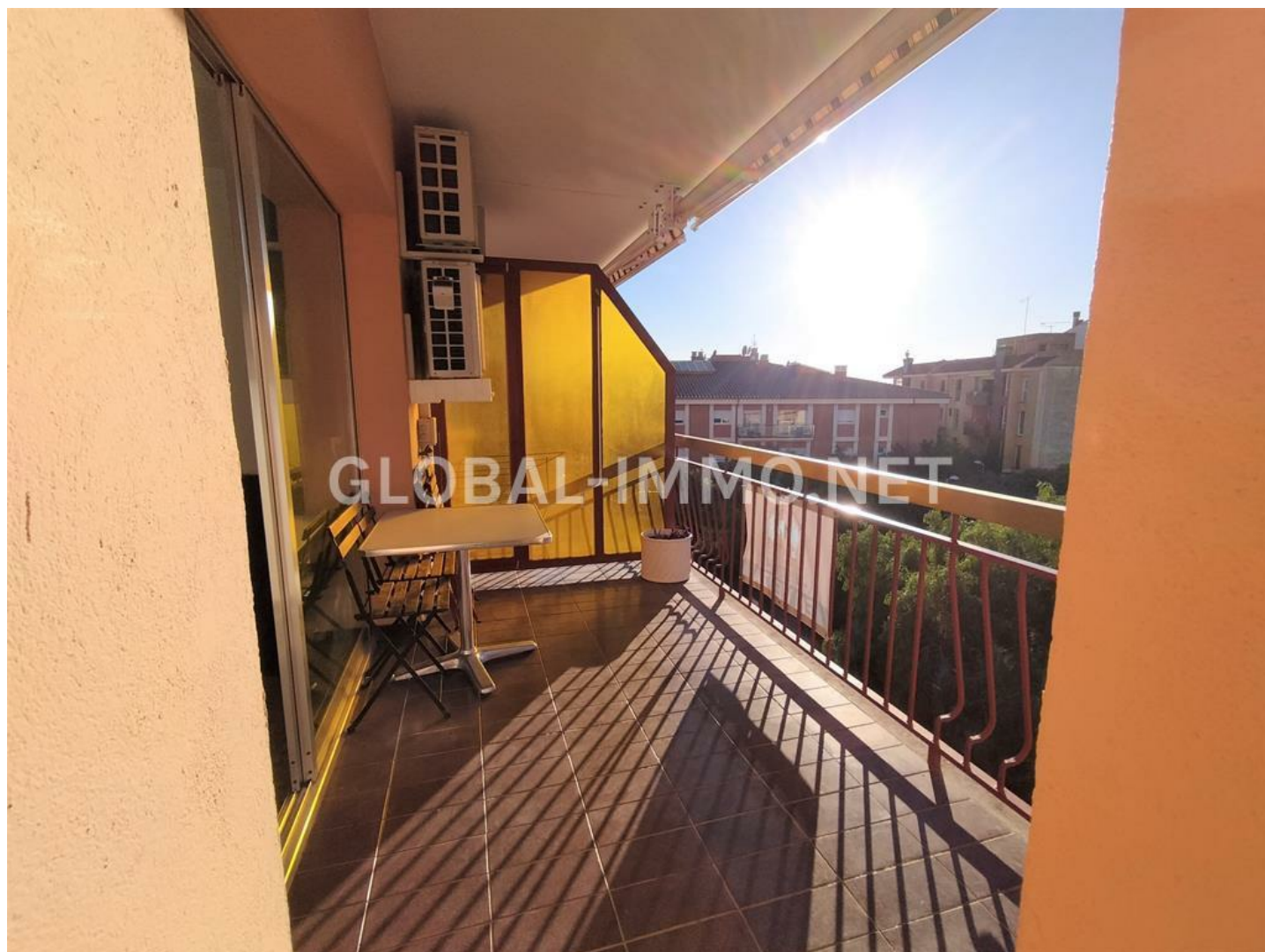


APARTMENT NEAR ROSES BEACH CENTER

REF. 01226 -

185 000 €



FEATURES

City	Roses
District	Center - Port
Situation / Exposition	West
Bedrooms	3
Bathrooms	2

Foors	3
Terrace area	8 m2
CO2 emissions	55 Kg CO2 / m2 year
Living area	73 m²
Energy consumption	328 KW h / m2 year
Property tax	450 €
Co-Ownership fees	520 €
Furnished	
Storage room	
Elevator	
Kitchen type	American kitchen, Kitchenette
Heating type	Reverse air conditioning
Energy certificate	G
Building condition	Good condition
CO2 emissions certificate	F